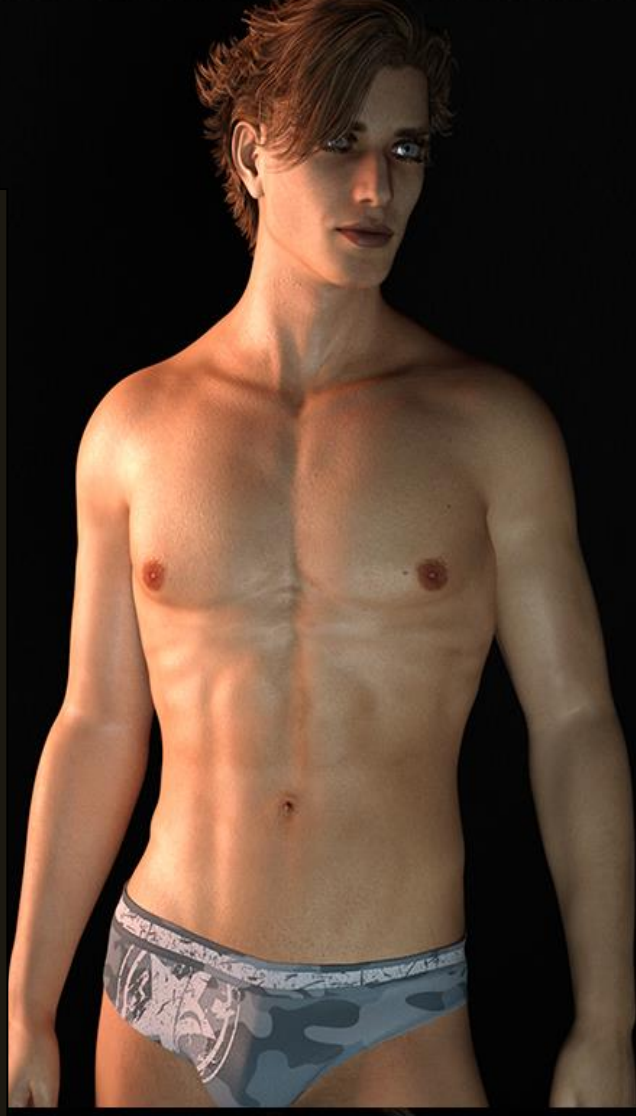


Realistic and Easy Photometric Lights for All Characters



SKU:12345

Artist:

I2D

Compatible Figures:

Genesis 8.1 Male

Compatible Software:

DAZ Studio 4.15

Product Details

Product Description

Illuminate any figure, male or female with this easy-to-use Iray light kit for the Daz Studio Iray rendering engine.

Included are 25 one-click light sets that are created with Daz Studio photometric lights and are great for use in figure portraits or body renderings. Just pick a set of lights from the library; light up your Character and hit render. Most light sets have been created to play with bold shadows that bring out muscle details and give renders an extra touch of edginess.

They can be used both indoors and outdoors, giving better quality to the images.

To achieve the best lighting effects, you should adjust the group of lights chosen to the position of their character, since they are placed in the position of the characters by default.

Some of these included lights are specially created to be converted to grayscale renderings for super sexy images.

What's Included and Features

- Characters Iray Lights (.DUF)
- 25 Iray Lightsets