

# Image Color Darken

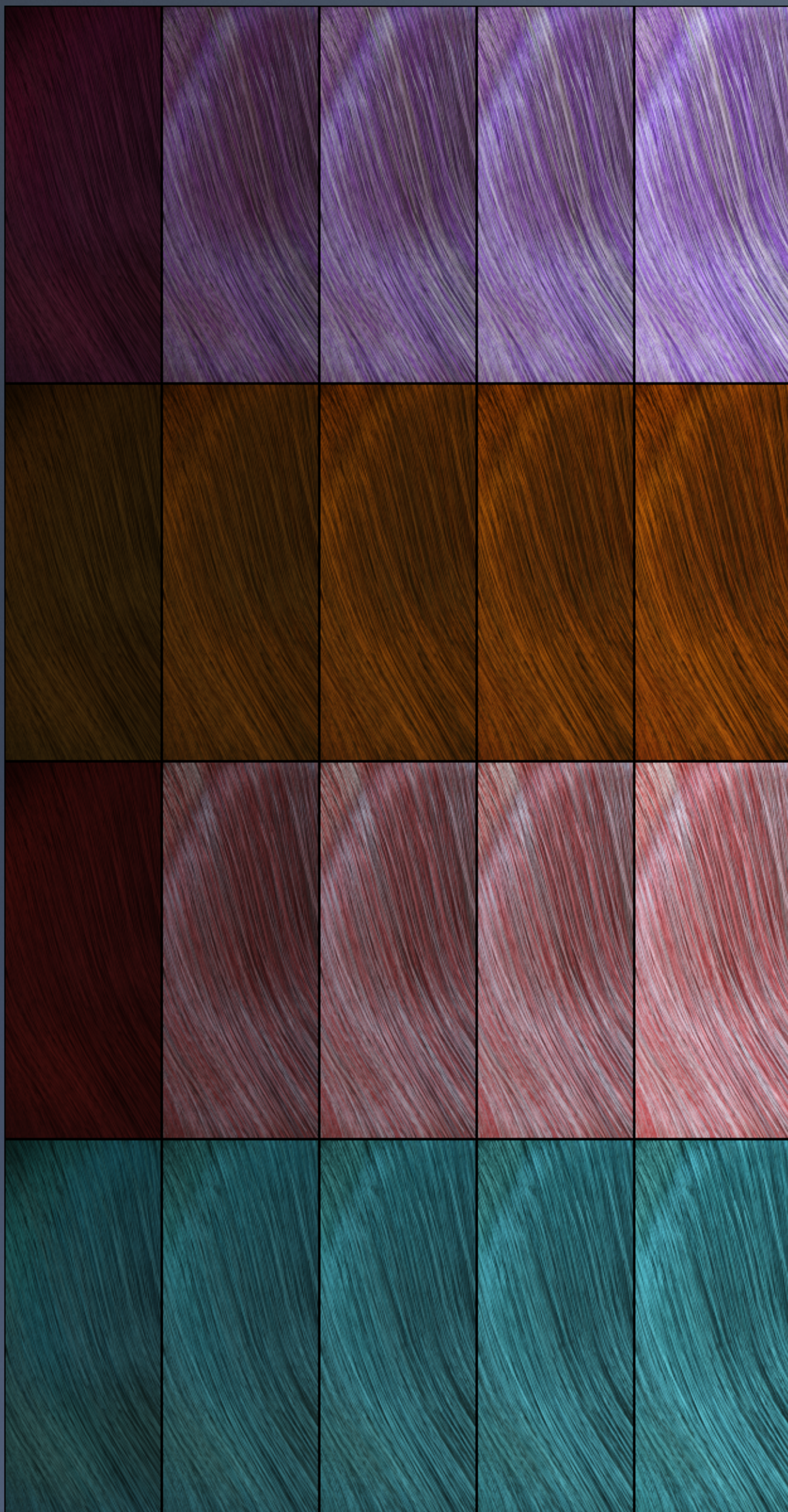
The "Image Color Darken" option is found in the image editor as "Scale", under the Instance Color tab. Settings are available for all 4 image channels together and separate.

**0.0**   **0.25**   **0.5**   **0.75**   **1.00**

These examples show you how the settings effect the different color options included in this set.

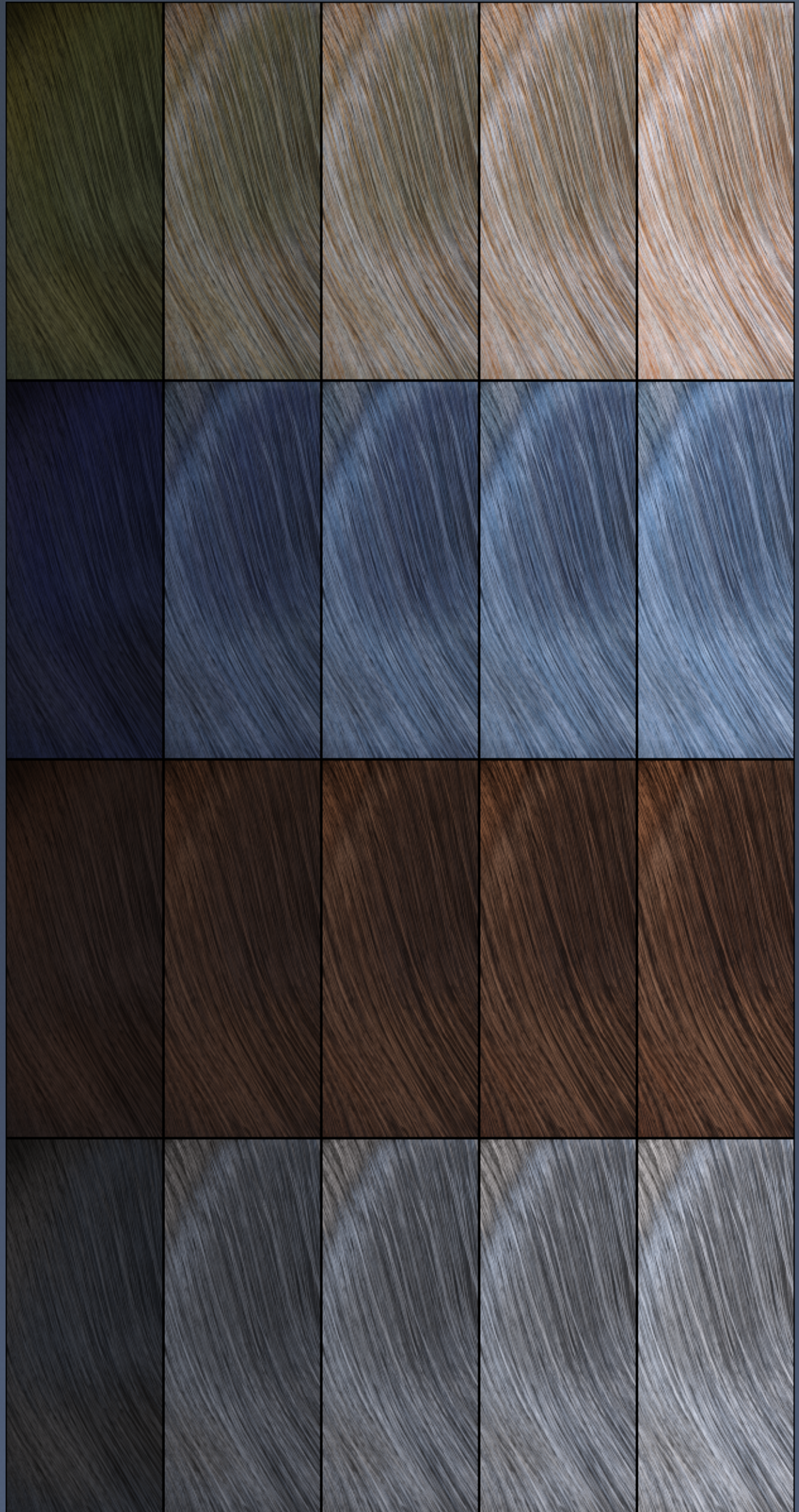
1.00 is the default for this setting in Daz Studio for all images. All images in each group will all look the same at 0.

This can be mixed with the Image Color Whiten presets as well for further color adjustments and mixing.



# Image Color Darken

*0.0*   *0.25*   *0.5*   *0.75*   *1.00*



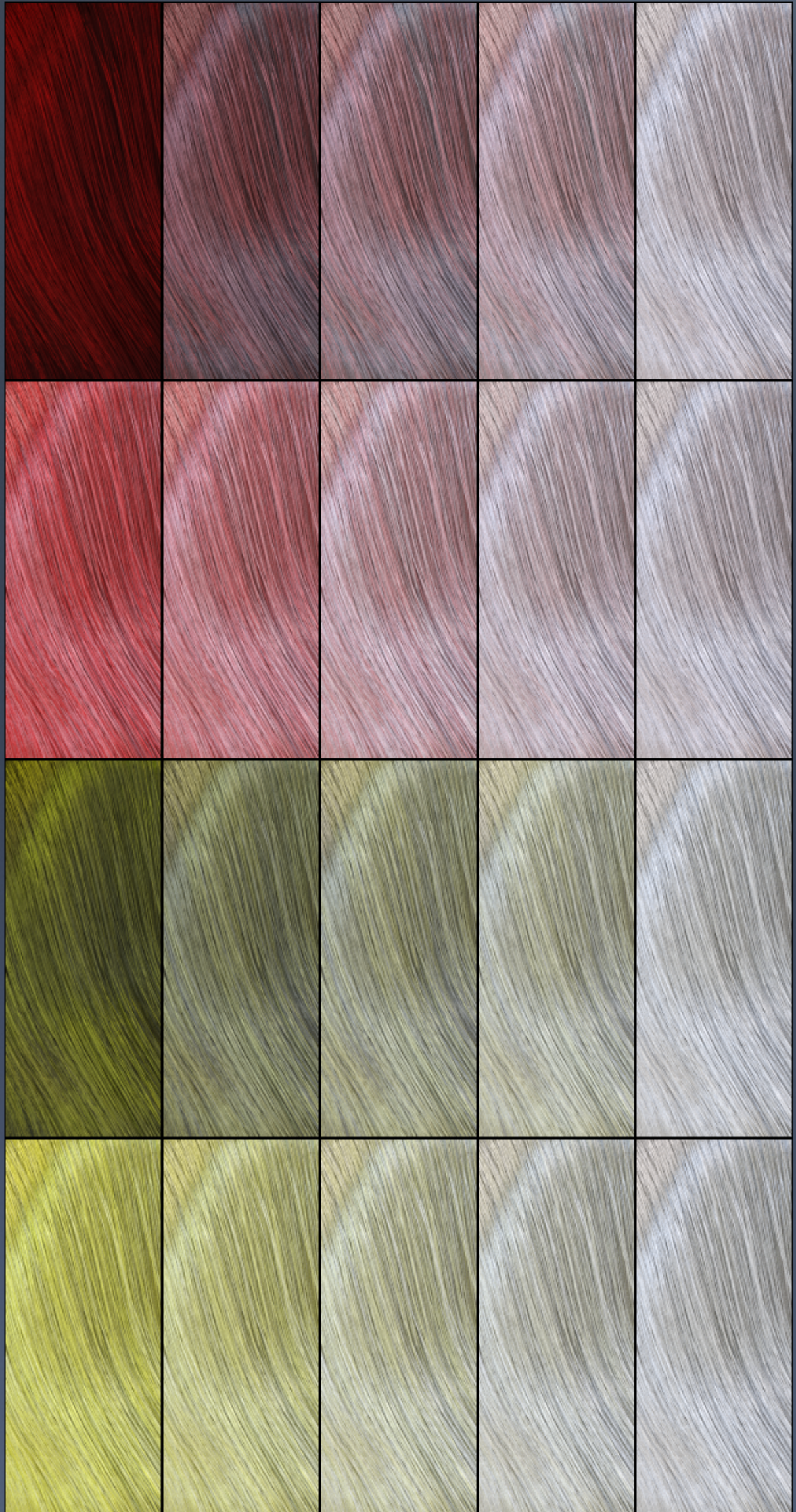
# Image Color Whiten

The "Image Color Whiten" option is found in the image editor as "Offset", under the Instance Color tab. Simply put, this makes the image map whiter. Settings are available for all 4 image channels together and separate.

**0% 25% 50% 75% 100%**

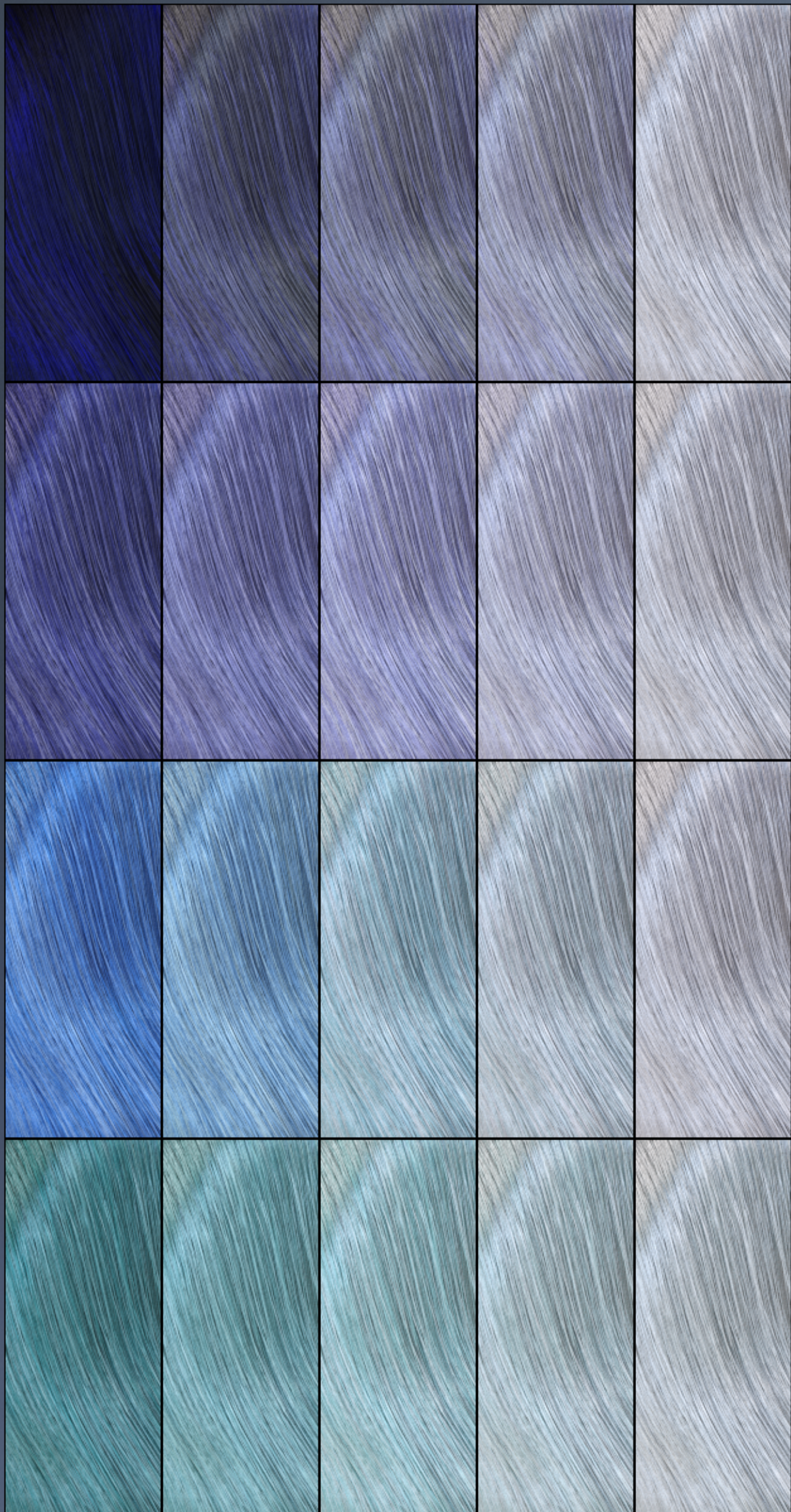
The following examples show how this setting effects the different shades of color included in this set.

0% is the default for this setting for all images in Daz Studio. A setting of 100% will always result in white for all images.



# Image Color Whiten

**0% 25% 50% 75% 100%**



# Image Color Whiten

*0% 25% 50% 75% 100%*

