

## USEFUL TIPS FOR KATARINA HD FOR GENESIS 8 FEMALE:

FIRST, THANK YOU FOR BUYING HER, I HOPE YOU WILL CREATE A LOT OF BEAUTIFUL RENDERS! HERE'S SOME USEFUL TIPS FOR SOME MINOR WEIRD THINGS YOU MIGHT RUN INTO:

### - EYELASHES NOT AT THE RIGHT PLACE UPON LOADING THE CHARACTER:

This is actually due to the custom height morph on her, but don't worry the eyelashes will be back to its place the moment you touch and move her by a tiny little bit :)

### - SOME CLOTHES ARE POKING THROUGH HER! DOES IT HURT?

Not at all! It is actually because of the custom body morph, but don't worry there is a very quick way of fixing it: Select the sharp clothes that is poking through, and find "Mesh Smoothing" under the Parameters tab, and turn up the smoothing iteration to around 8, and that should do it!

### - HD DETAILS, HOW DO I SEE THEM?

You can simply see the HD details by dialing the subdivision level, which you can find under the parameter tab with Katarina Selected, to either 2, or 3!

### - HOW CAN I RECREATE YOUR PROMO IMAGES? THEY LOOK SO GOOD!

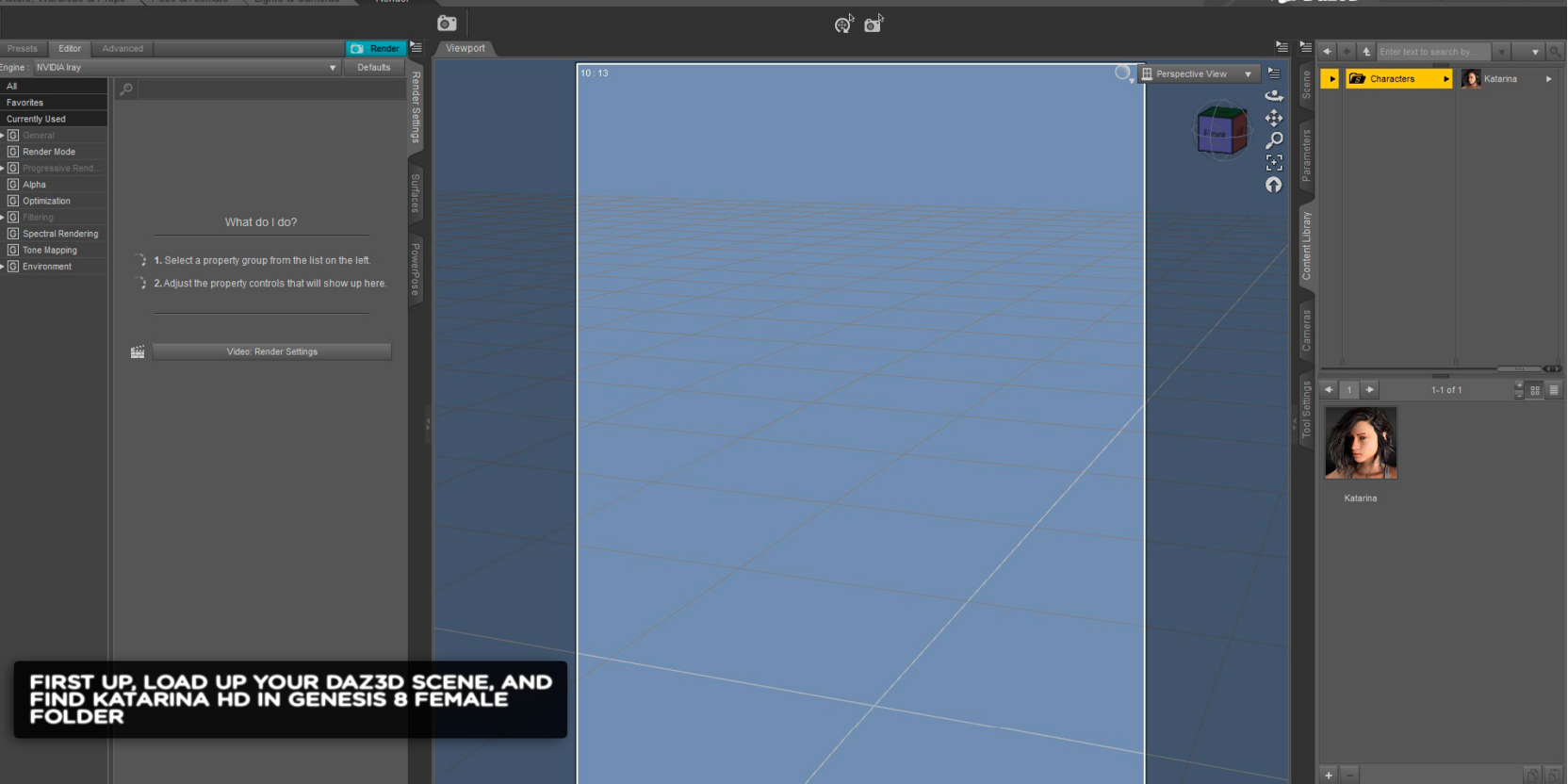
Thank you! And good news for you, I will be releasing almost all "non complex" scenes on my official thread for Katarina HD! Simply check out the forum and find me :)

### - HOW DO I USE THE LIE MAKEUP LAYERS? THEY OVERLAP EACH OTHERS WHEN I TRIED TO SWAP MAKEUP...

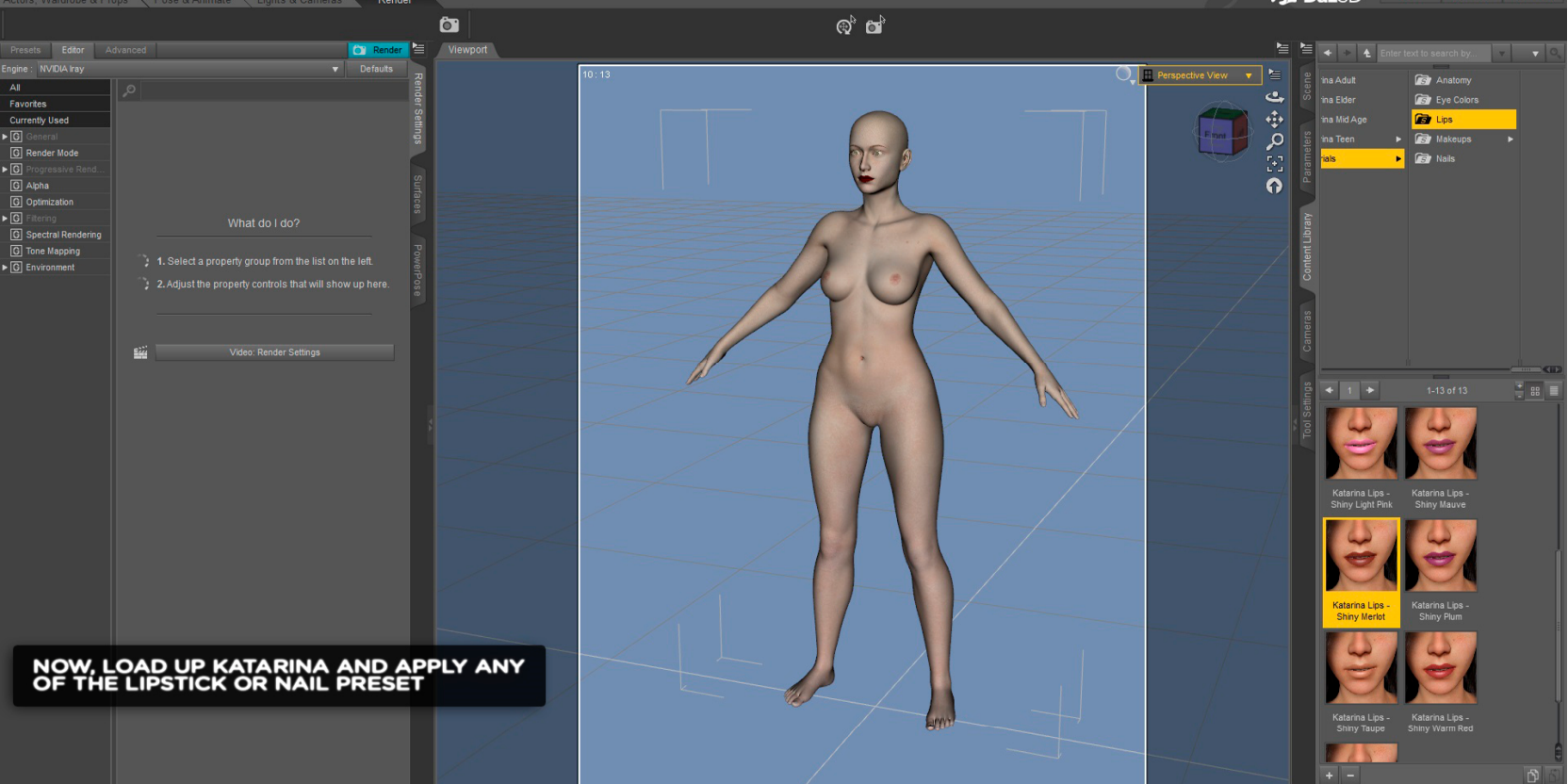
LIE Layers are supposed to be applied on top of each other! So if you want to replace one makeup with another, you will need to reload the base MAT to clear out all the LIEs you've been stacking on the poor map :P

### - HOW DO I USE YOUR "CREATE YOUR OWN LIPS/NAILS"?

It is a tiny little hard to explain "Create Your Own Lips/Nails" properly by words, so scroll down time to bring up some big HD screenshots!



**FIRST UP, LOAD UP YOUR DAZ3D SCENE, AND FIND KATARINA HD IN GENESIS 8 FEMALE FOLDER**



Presets Editor Advanced **Render**

Engine: NVIDIA Iray Defaults

Render Settings Surfaces PowerPose

What do I do?

1. Select a property group from the list on the left.
2. Adjust the property controls that will show up here.

Video: Render Settings



Enter text to search by...

Scene

- ina Adult
- ina Elder
- ina Mid Age
- ina Teen
- ails**

Parameters

- Anatomy
- Eye Colors
- Lips**
- Makeups
- Nails

Content Library

Cameras

Tool Settings

1 1-13 of 13

Katarina Lips - Shiny Light Pink	Katarina Lips - Shiny Mauve
Katarina Lips - Shiny Merlot	Katarina Lips - Shiny Plum
Katarina Lips - Shiny Taupe	Katarina Lips - Shiny Warm Red

**NOW, LOAD UP KATARINA AND APPLY ANY OF THE LIPSTICK OR NAIL PRESET**

Shader: Iray Uber

Enter text to filter by...

Tags

Material ID: 0 0 0

Base Mixing: Weighted

Diffuse Weight: 0.87

Base Color: 0.14 0.00 0.0000

Diffuse Roughness: 0.00

Diffuse Overlay Weight: 0.70

Diffuse Overlay Weight Squared: On

Diffuse Overlay Color: 0.14 0.00 0.0000

Diffuse Overlay Color Effect: Scatter Only

Diffuse Overlay Roughness: 0.00

Translucency Weight: 1.00

Base Color Effect: Scatter Only

Translucency Color: 1.00 1.00 1.00

Dual Lobe Specular Weight: 1.00

Dual Lobe Specular Reflectivity: 0.38

Specular Lobe 1 Roughness: 0.44

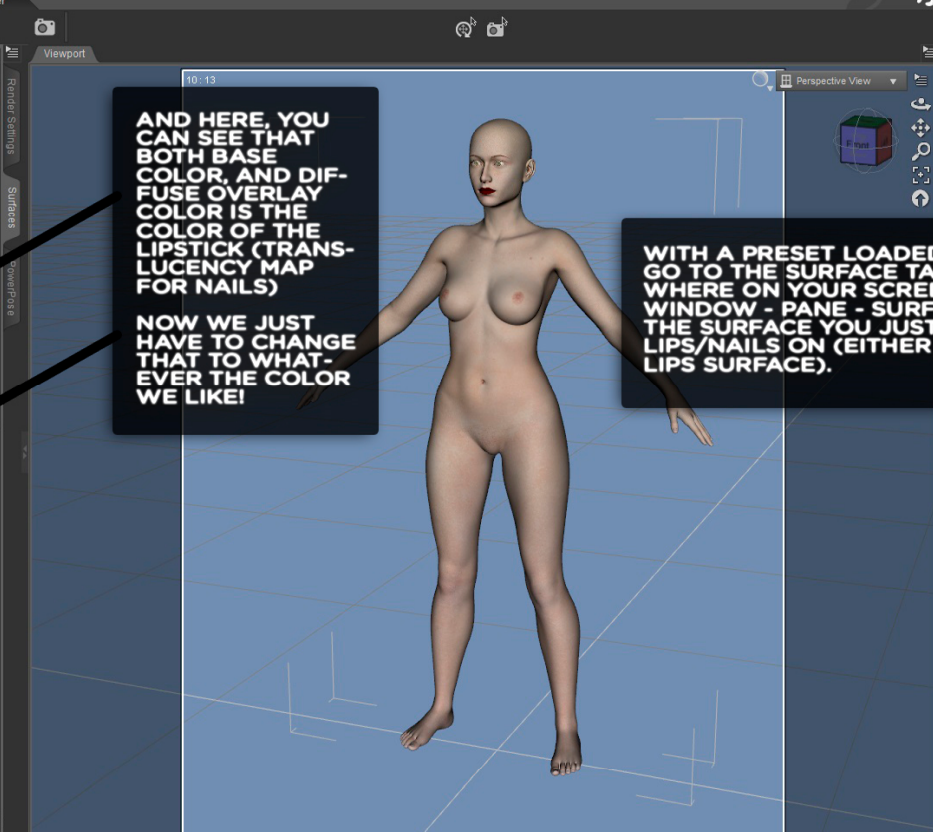
Specular Lobe 2 Roughness: 0.43

Dual Lobe Specular Ratio: 0.85

Glossy Weight: 0.00

Share Glossy Inputs: On

Show Sub Items



**AND HERE, YOU CAN SEE THAT BOTH BASE COLOR, AND DIFFUSE OVERLAY COLOR IS THE COLOR OF THE LIPSTICK (TRANSLUCENCY MAP FOR NAILS)**

**NOW WE JUST HAVE TO CHANGE THAT TO WHATEVER THE COLOR WE LIKE!**

**WITH A PRESET LOADED, YOU CAN NOW GO TO THE SURFACE TAB LOCATED SOMEWHERE ON YOUR SCREEN (OR UNDER WINDOW - PANE - SURFACES), AND FIND THE SURFACE YOU JUST APPLIED LIPS/NAILS ON (EITHER FINGERNAIL OR LIPS SURFACE).**

Enter text to search by...

Scene: ina Adult, ina Elder, ina Mid Age, ina Teen

Parameters: Anatomy, Eye Colors, Lips, Makeups, Nails

Tool Settings: 1-13 of 13

Katarina Lips - Shiny Light Pink

Katarina Lips - Shiny Mauve

Katarina Lips - Shiny Merlot

Katarina Lips - Shiny Plum

Katarina Lips - Shiny Taupe

Katarina Lips - Shiny Warm Red

Presets Editor Shader Baker

Shader: Iray Uber

All Favorites

Currently Used

Genesis 8 Female...  
Katarina  
Default Templates  
Hair  
Skin  
Skin-Lips-Nails  
Surfaces  
Arms  
Cornea  
Ears  
EyeMoisture  
EyeSocket  
Face  
Fingernails  
Hairs  
Legs  
Lips  
Mouth  
Pupils  
Sclera  
Teeth  
Toenails  
Torso

Render Settings Surfaces PowerPose

Enter text to filter by...

Tags

Material ID  
0 0 0

Base Mixing  
Weighted

Diffuse Weight  
0.87

Base Color  
0.14 0.00 0.0000

Diffuse Roughness  
0.00

Diffuse Overlay Weight  
0.70

Diffuse Overlay Weight Squared

Diffuse Overlay Color  
0.14 0.00 0.0000

Diffuse Overlay Color Effect  
Scatter Only

Diffuse Overlay Roughness  
0.00

Transparency Weight  
1.00

Base Color Effect  
Scatter Only

Transparency Color  
1.00 1.00 1.00

Dual Lobe Specular Weight  
1.00

Dual Lobe Specular Reflectivity  
0.38

Specular Lobe 1 Roughness  
0.44

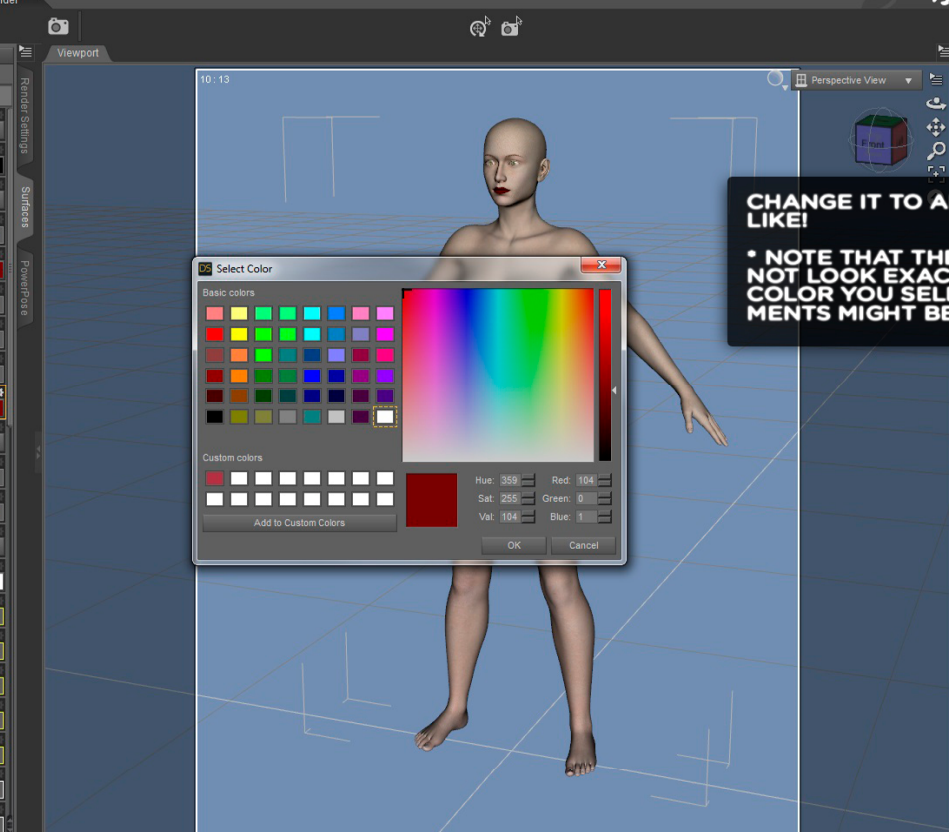
Specular Lobe 2 Roughness  
0.43

Dual Lobe Specular Ratio  
0.65

Glossy Weight  
0.00

Share Glossy Inputs  
On

Show Sub Items



**CHANGE IT TO ANY COLOR YOU LIKE!**

**\* NOTE THAT THE COLOR MIGHT NOT LOOK EXACTLY LIKE THE COLOR YOU SELECT, SOME EXPERIMENTS MIGHT BE NEEDED :)**

Enter text to search by...

Scene  
ina Adult  
ina Elder  
ina Mid Age  
ina Teen  
Nails

Anatomy  
Eye Colors  
Lips  
Makeups

Tool Settings  
1-13 of 13

Katarina Lips - Shiny Light Pink  
Katarina Lips - Shiny Mauve  
Katarina Lips - Shiny Merlot  
Katarina Lips - Shiny Plum  
Katarina Lips - Shiny Taupe  
Katarina Lips - Shiny Warm Red

VOILA! NOW YOU HAVE THE LIP-STICK/NAIL COLOR YOU WANTED!!  
HAPPY RENDERING :)

Shader : Iray Uber

Enter text to filter by...

Tags

Material ID: 0 0 0

Base Mixing: Weighted

Diffuse Weight: 0.87

Base Color: 0.22 0.00 1.00

Diffuse Roughness: 0.00

Diffuse Overlay Weight: 0.70

Diffuse Overlay Weight Squared: On

Diffuse Overlay Color: 0.22 0.00 1.00

Diffuse Overlay Color Effect: Scatter Only

Diffuse Overlay Roughness: 0.00

Translucency Weight: 1.00

Base Color Effect: Scatter Only

Translucency Color: 1.00 1.00 1.00

Dual Lobe Specular Weight: 1.00

Dual Lobe Specular Reflectivity: 0.38

Specular Lobe 1 Roughness: 0.44

Specular Lobe 2 Roughness: 0.43

Dual Lobe Specular Ratio: 0.85

Glossy Weight: 0.00

Share Glossy Inputs



Enter text to search by...

Scene

- Ina Adult
- Ina Elder
- Ina Mid Age
- Ina Teen
- als

Parameters

- Anatomy
- Eye Colors
- Lips
- Makeups
- Nails

Content Library

Cameras

Tool Settings

1-13 of 13

- Katarina Lips - Shiny Light Pink
- Katarina Lips - Shiny Mauve
- Katarina Lips - Shiny Merlot
- Katarina Lips - Shiny Plum
- Katarina Lips - Shiny Taupe
- Katarina Lips - Shiny Warm Red