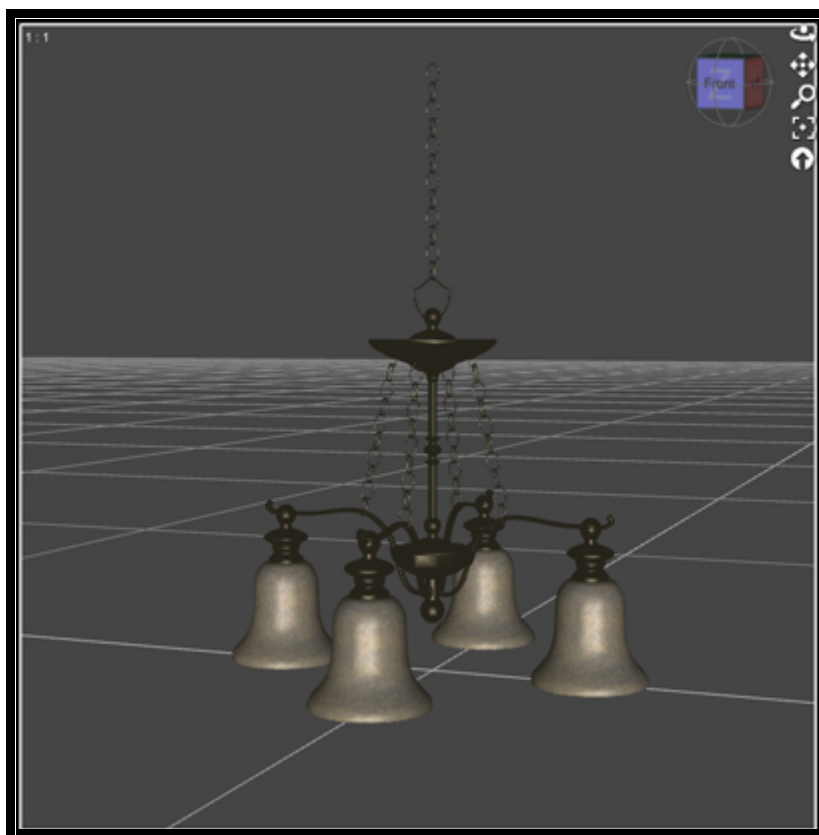


ART Light the Way

Parenting point light to the light props instructions.

Step1: Load in the light prop of your choice from the prop library.

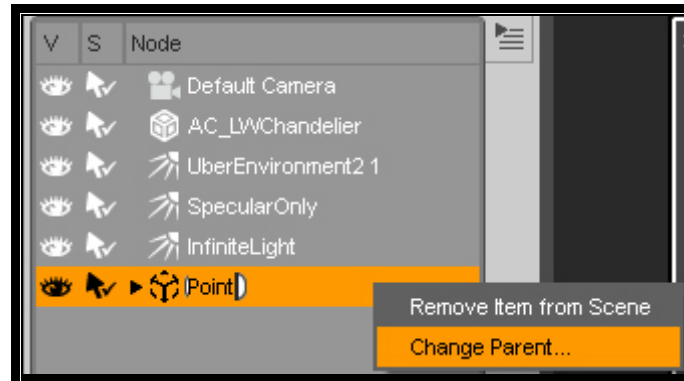


Step 2: Add the DAZ Studio mat setting from the pose library (suggest using the “Light On” ones).

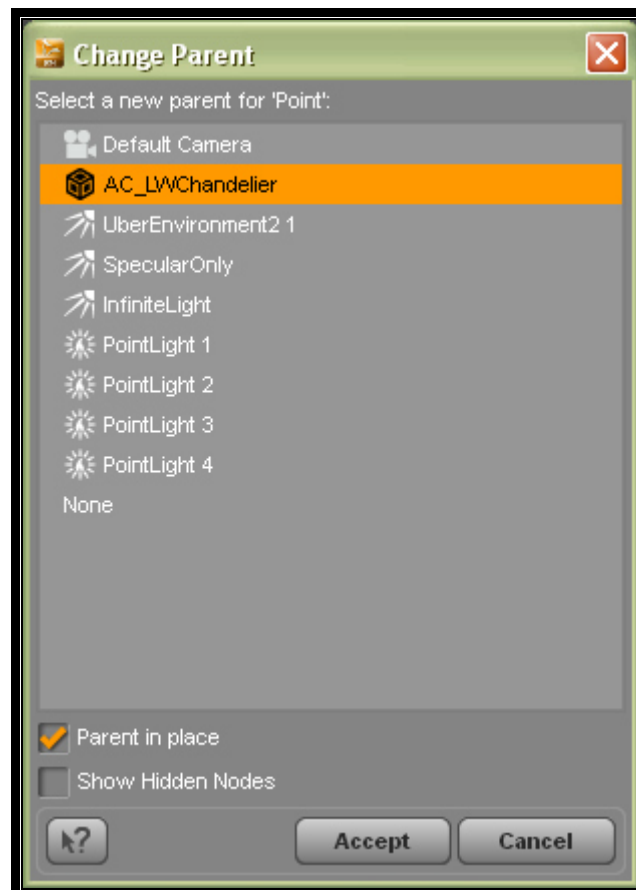
Step 3: Load in the Light1 (base light set) and then the corresponding light set from the light library (select either the AOIBL or the IBL version).

The lights load with the point lights already parented to a null (called Point).

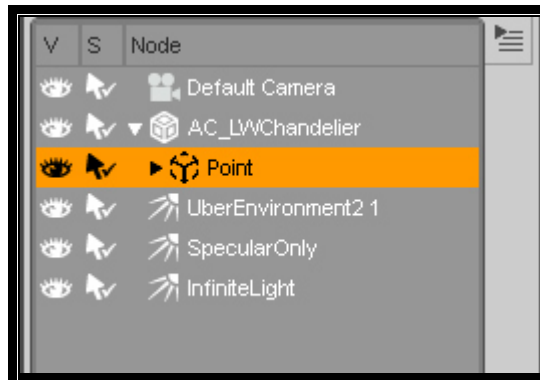
Step 4: In the scene tab right click the null and select “Change Parent”



Step 5: In the dialog box that pops up select the light prop that you are parenting the null to and click on accept.



You can now move the light prop around the scene and the point lights will stay with the prop while the other lights do not move.



An alternative method of parenting a prop can be seen here http://www.youtube.com/watch?v=_n-3JcTZ6mc

Please note: If you move the files from their installed location make sure to move all files with the .ds and .daz file extension. Otherwise the lights may not load properly, and without the .lt2 files the lights will not load from a poser runtime.

